



GU40PS

60Hz@1800RPM 208/120V 3PH

*Imagen de referencia.

Overall Performance

PRP Continuous Power kVA	36
PRP Continuous Power kW	28.8
LTP Stand-by power kVA	40
LTP Stand-by power kW	32
Power factor cos ϕ	0.8
Voltage VAC	208/120
Frequency Hz	60
Ampere PRP/LTP	88 / 97
Speed RPM	1800

GU40PS

Overall Performance

Length mm	2220
Width mm	960
Height mm	1258
Net Weight kg	937
Gross Weight kg	962
Sound pressure at 7 mt dBA	67.00

Silent generator with following specifications:

Frame:

- Heavy duty fabricated welded base plate with high quality steel UNIS235 JR.
- Fuel tank with drain plug and retention basin
- Feet and four lifting holes on the base
- Oil draining mechanical pump

Canopy:

- Four large doors for easy access for service and maintenance
- Electro-galvanized sheet DC01+ZE25/25(EN10152:2009)
- High precision sheet cutting with nitrogen laser technology to avoid oxidation.
- Sandblasting and cataphoresis treatment of intake / exhaust grids
- Weatherproof sealed joints
- Lockable handles in each door
- RAL 9010 "orange peel" specific powder coat paint for outdoor usage
- Rain cap on exhaust outlet
- Coolant refilling specific hatch
- Fuel filter outside enclosure
- Ecological Sound foam: 100% Recyclable, 35 mm thickness, fire proof self-extinguishing class I fire-reaction compliant washable, mechanically fixed to the frame

Muffler:

- Residential type
- Integrated in the canopy
- With aluminum coating

Control Panel:

- Metal control panel with protective back cover
- Dedicated area to make easier the electrical connection to the load

All units and components are prototype tested, factory build and production tested. A specific control procedure during the several stages of production ensures long life and reliability.

GU40PS

60Hz@1800RPM 208/120V 3PH

Engine general data

Engine brand	Perkins
Model	1103A-33G
PRP Power kW	32.20
LTP Power kW	35.40
Fuel	Diesel
Nr. cylinders	3
Air intake	Aspirated
Cooling	Water
Cubic capacity l	3.30
Speed regulation	Mechanical
Performance Class - steady state regulator accuracy +/- %	G2 - 0.75
Load Step G1 - KWe	-
Load Step G2 - Kwe	-
Load Step G3 - KWe	-
Voltage VDC	12
Emissions	-

Alternator general data

Alternator Brand	Stamford
Model	SOL2-P1
Type of excitation	Self-excited
Type of regulation	AVR
Regulator precision +/- %	1.00

Structure data

Type of structure	STRONG
Tank capacity l	100
Retention basin	Yes
Exhaust diameter mm	50

SOLDIERPYE

Fuel Consumption

Consumption 25% l./h	3.10
Consumption 25% l./h	4.90
Consumption 25% l./hr	6.60
Consumption 25% l./h	8.60
Autonomy at 75% of load h.	=15 h

Engine liquids and equipment

Type of lubricant	Oil SAE 15W40
Lubrication capacity l.*	8.30
Type of coolant	Antifreeze liquid
Coolant capacity l.*	10.20
Air intake filter	Paper cartridge
Battery capacity Ah.	70
Number of batteries*	1

Lubrication System

AC pump suction head kPa	2
Combustion air flow volume LTP m ³ /min	2.57
Cooling air capacity LTP m ³ /min	70.00
Exhaust gas flow flow-density LTP m ³ /min	6.60
Exhaust gas temperature LTP °C	530.0
Brake mean effective pressure kPa	10.00
Energy to exhaust LTP kWt	34.00
Energy to coolant LTP kWt	22.00
Energy to radiation LTP kWt	6.00



Control panel features



DSE-4520



*Imagen de referencia.

Protection cover
Circuit breaker
AMF controler DSE4520

- Voltmeter, frequencymeter, Ammeter
- Generator power (kW, kV, Ar, kV A & pf) monitoring.
- Hour meter
- Fuel level meter
- Overland (kW & kV Ar) protection
- Low oil pressure protection
- Higt coolant temperature protection

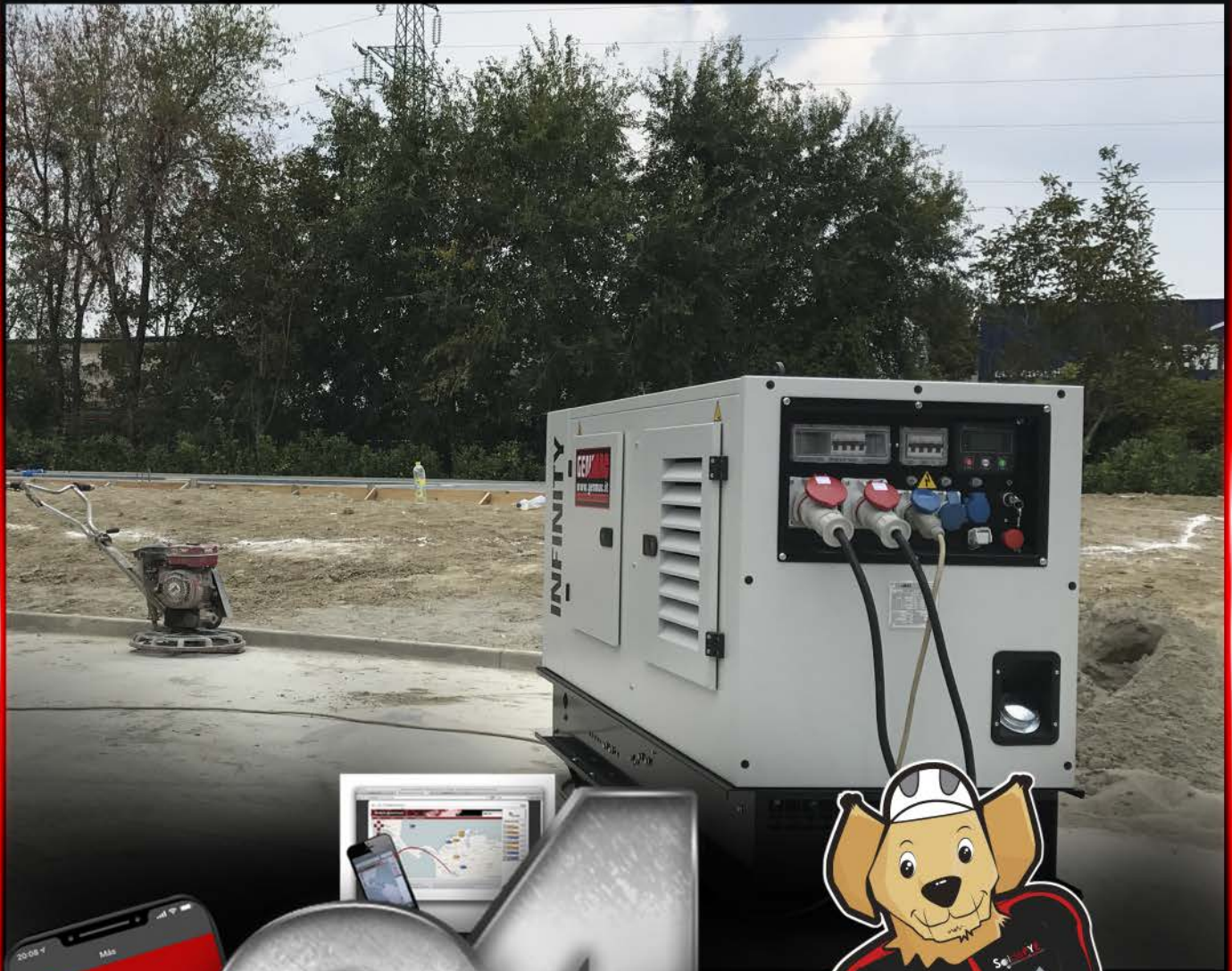
- Low fuel level protection
- Battery charger alternator fault
- Rpm protector

Emergency stop button
Terminal board for ATS connection
Battery charger
On/off switch

Data reference

Standard reference conditions temperature 25 °C, altitude 1-1000m asl, relative humidity 30%, atmospheric pressure 100 kPa (1 bar), power factor 0,8 lag, balanced load - non distortional. Fuel consumption is nominal and refers to specific weight 0,850 gr/lt. Power performance data as quoted can be obtained after the initial running-in period of the engine, during which one has to follow the instructions of the engine manufacturer as stated in the use and maintenance manual of the specific engine. The tolerance shown by the engine manufacturer is +/-5%. Sound power values refer to free field conditions: the installation site may influence the values. Dimensions, weights and other specifications contained in the technical data sheet and related attachments are nominal, subject to tolerances and refer to the model with standard equipment; any optional and additional equipment/accesories can modify weight, dimensions, performance, P.R.P. Prime power-continuous power at variable load: The power that a genset can supply in continuous service at variable load for an any number of hours per year while respecting the maintenance intervals established in the envirometal conditions stated by the Manufacturer. according to ISO8528-1. The average power supplied over time over time and any the maintenance intervals established in the environmental conditions stated by the Manufacturer according to ISO 8528-1. The number of hours per year is stated by the Manufacturer. Overload is not permitted. *For reasons of transport and/or Storage, liquids(oli and antifreeze) and batteries not be included in the delivery.

SoldePYE



A composite graphic featuring a smartphone on the left displaying the SoldePYE mobile application interface. In the center, a large, metallic, 3D number '24' is prominently displayed. To the right of the '24' is a cartoon dog mascot wearing a black and red firefighter's uniform, a white helmet, and a yellow fire bucket. The entire graphic is set against a dark background with blue light effects.

HORAS

¡Hablemos!